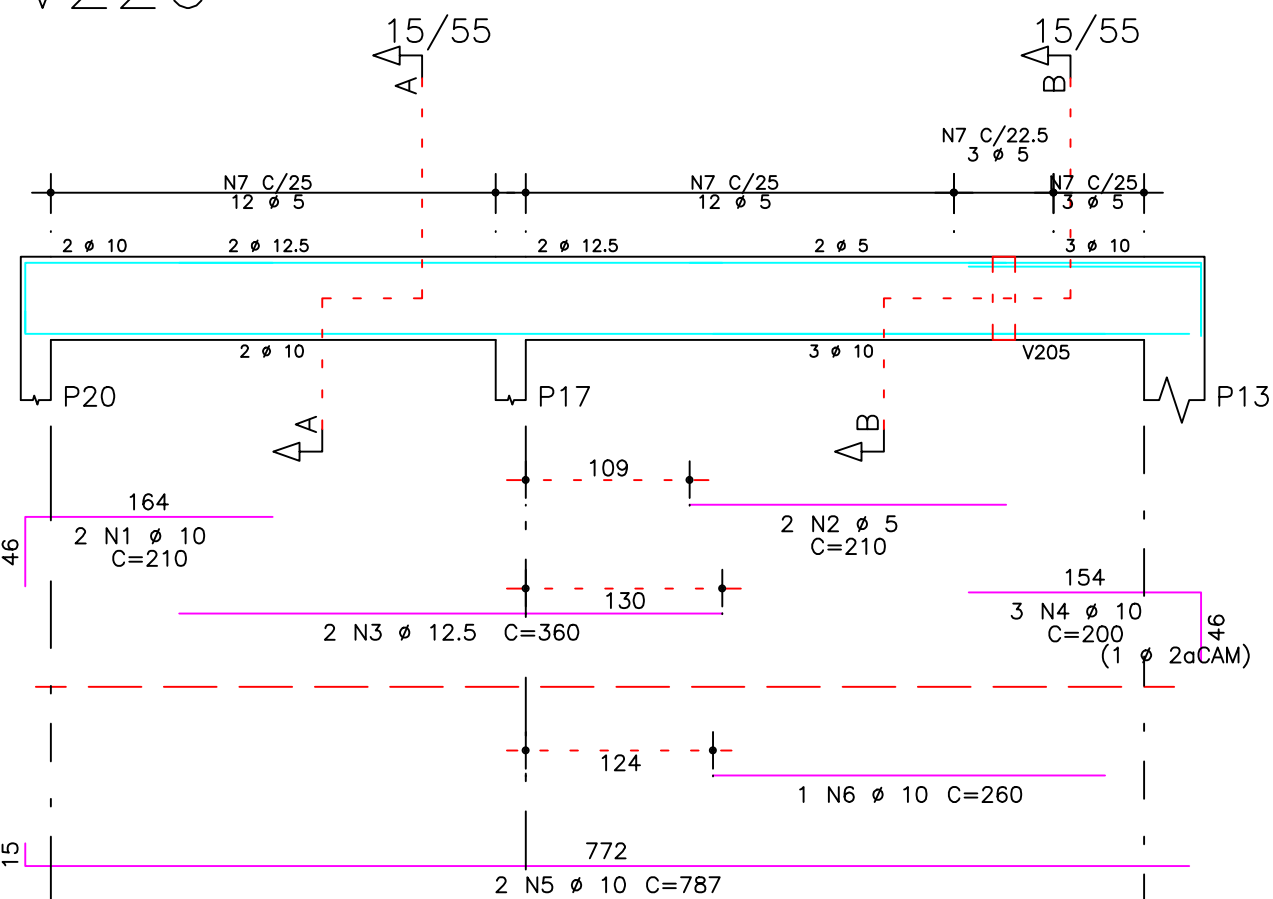
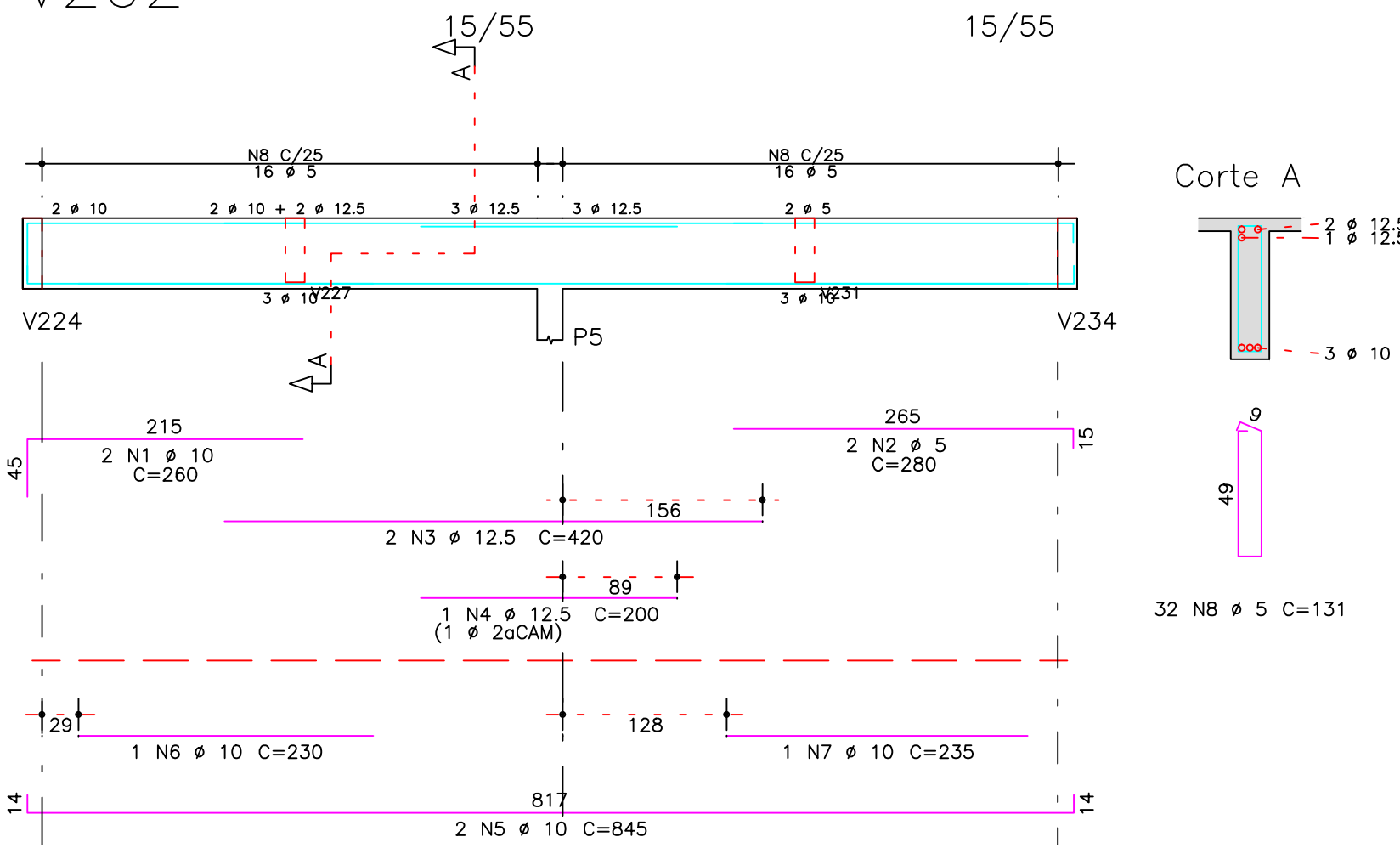


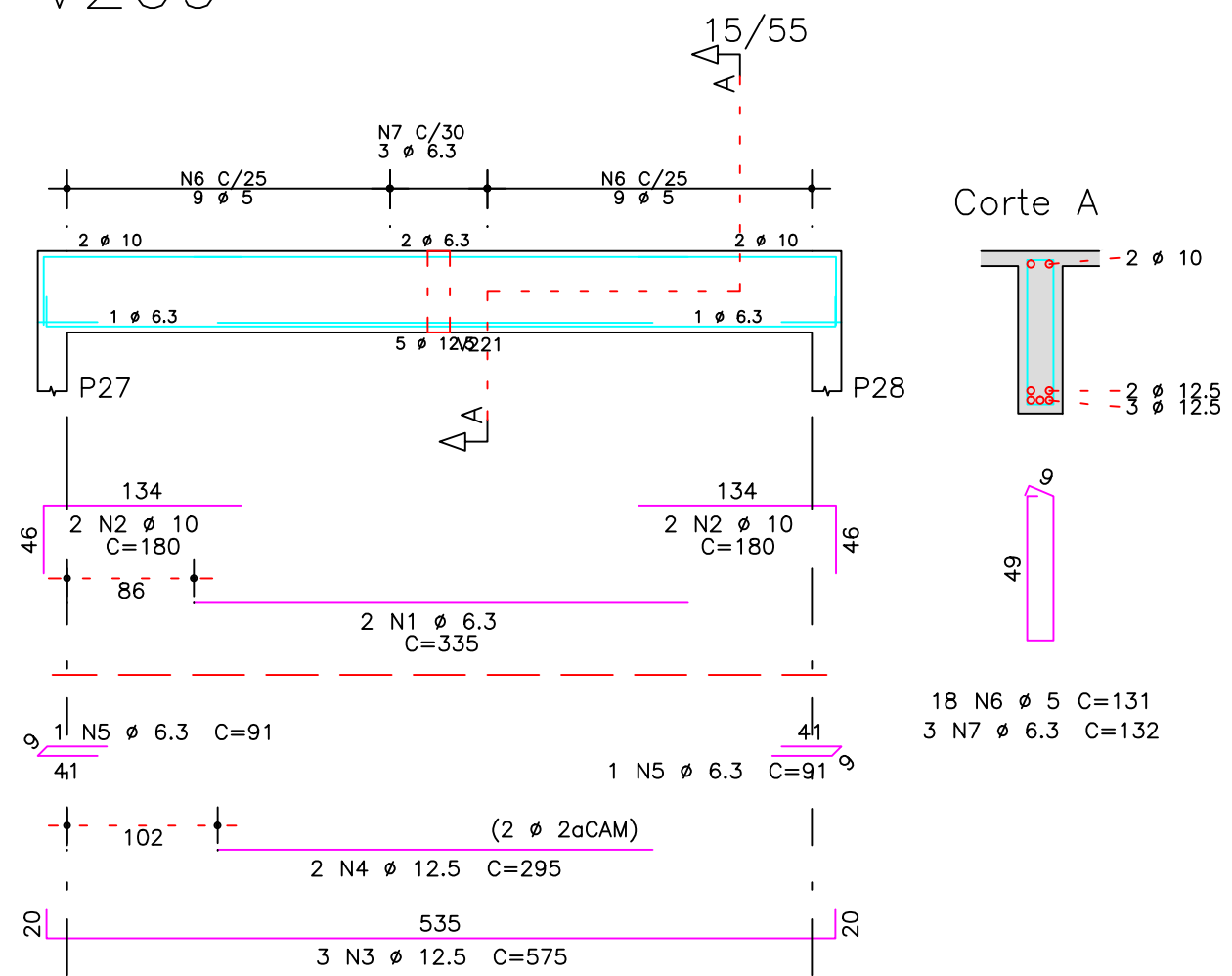
V226



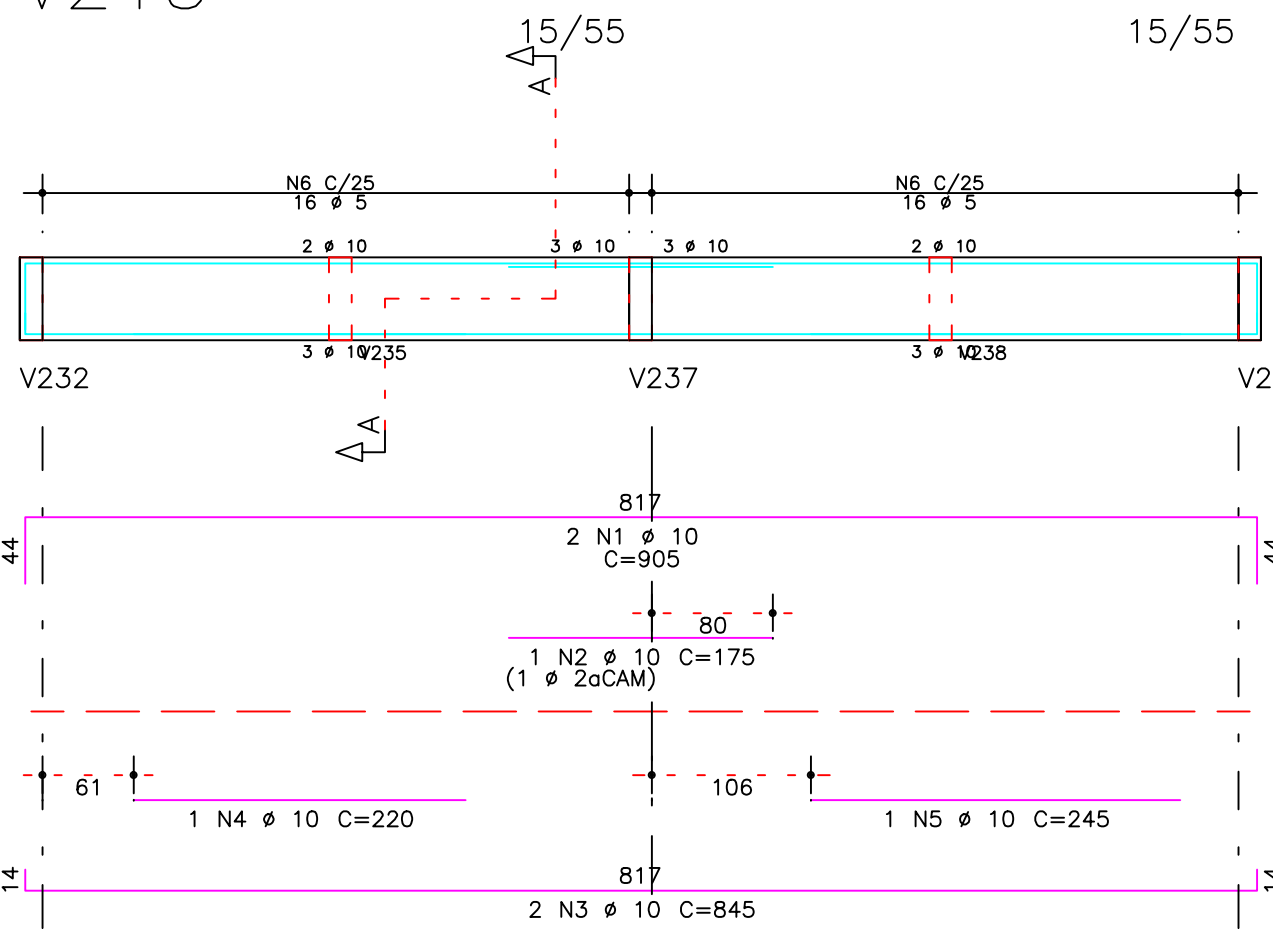
V202



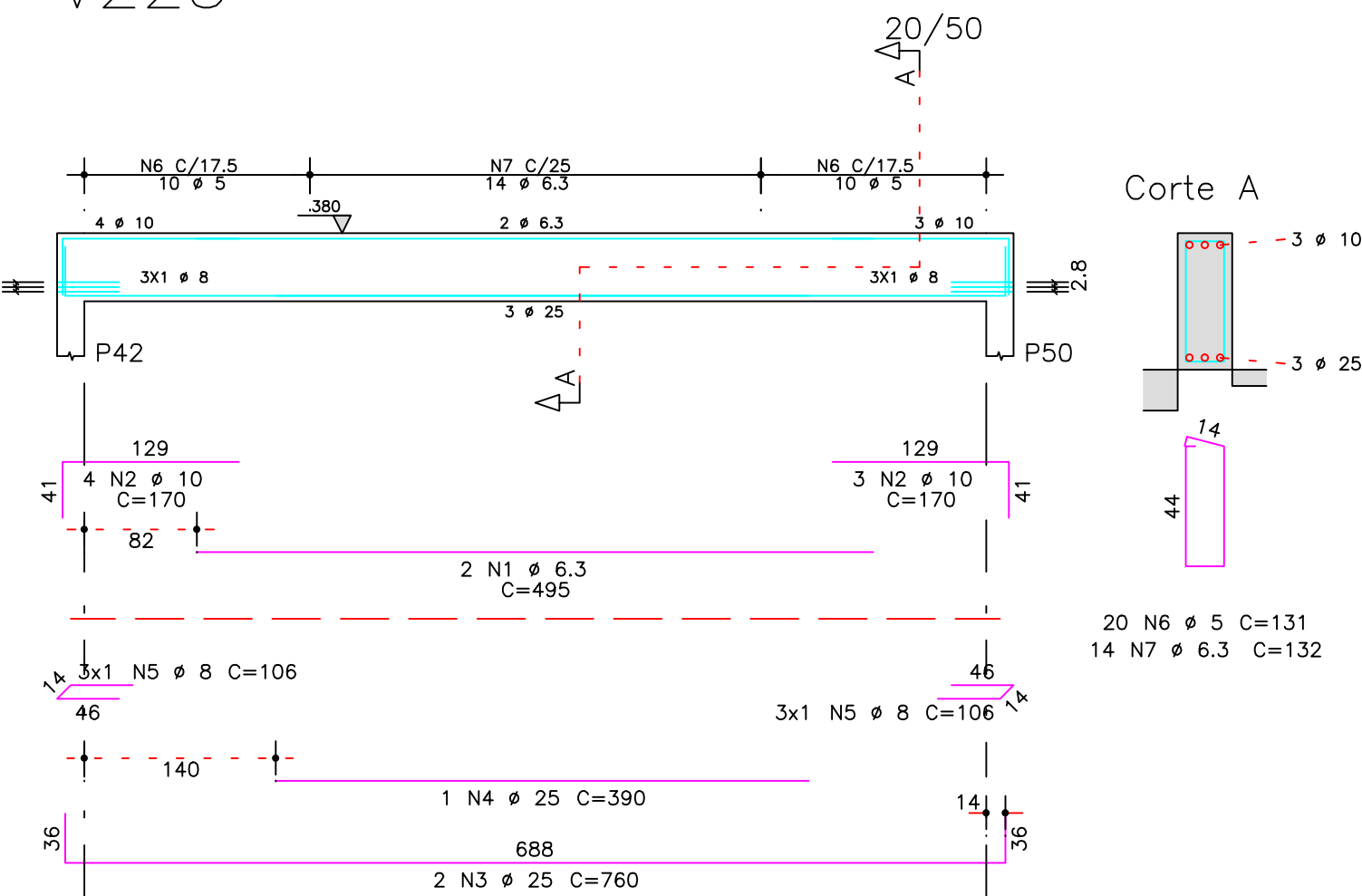
V209



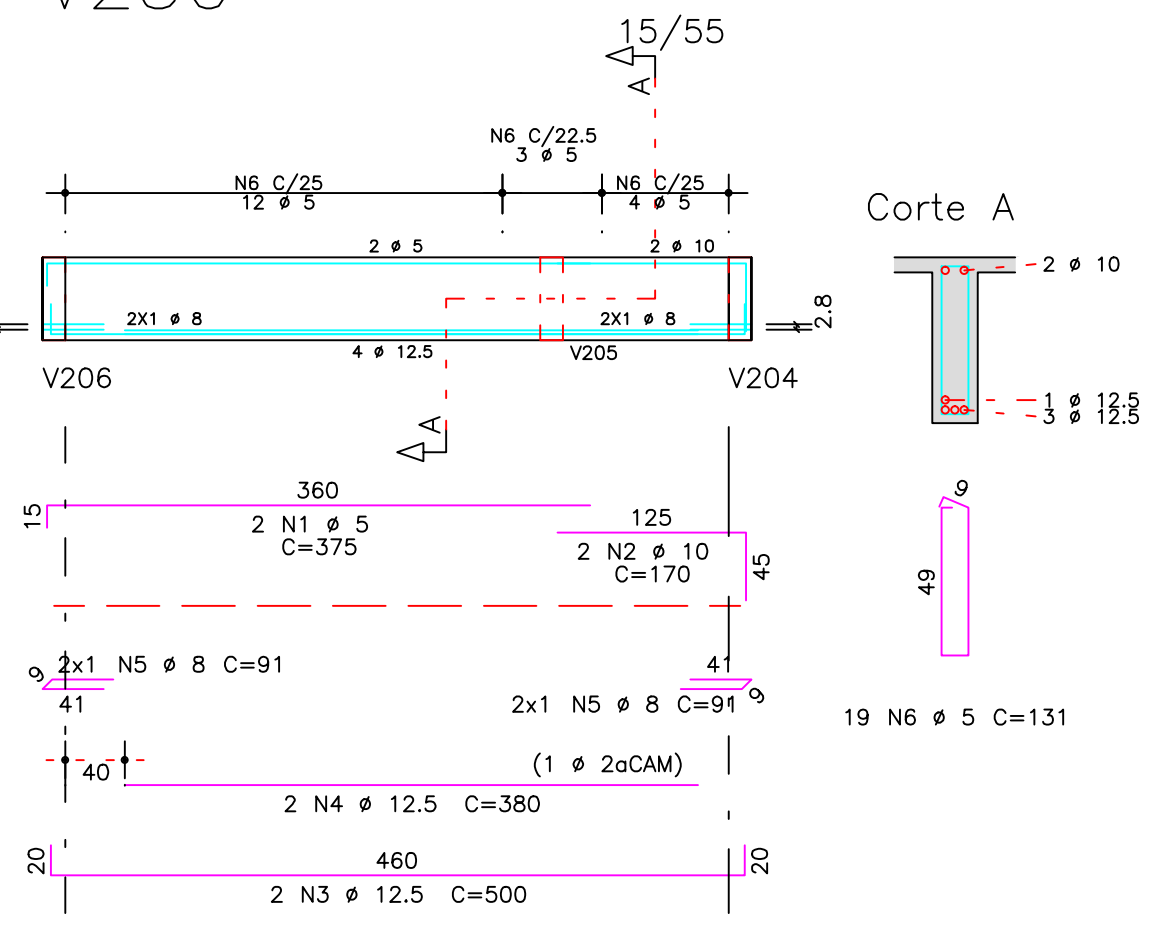
V213



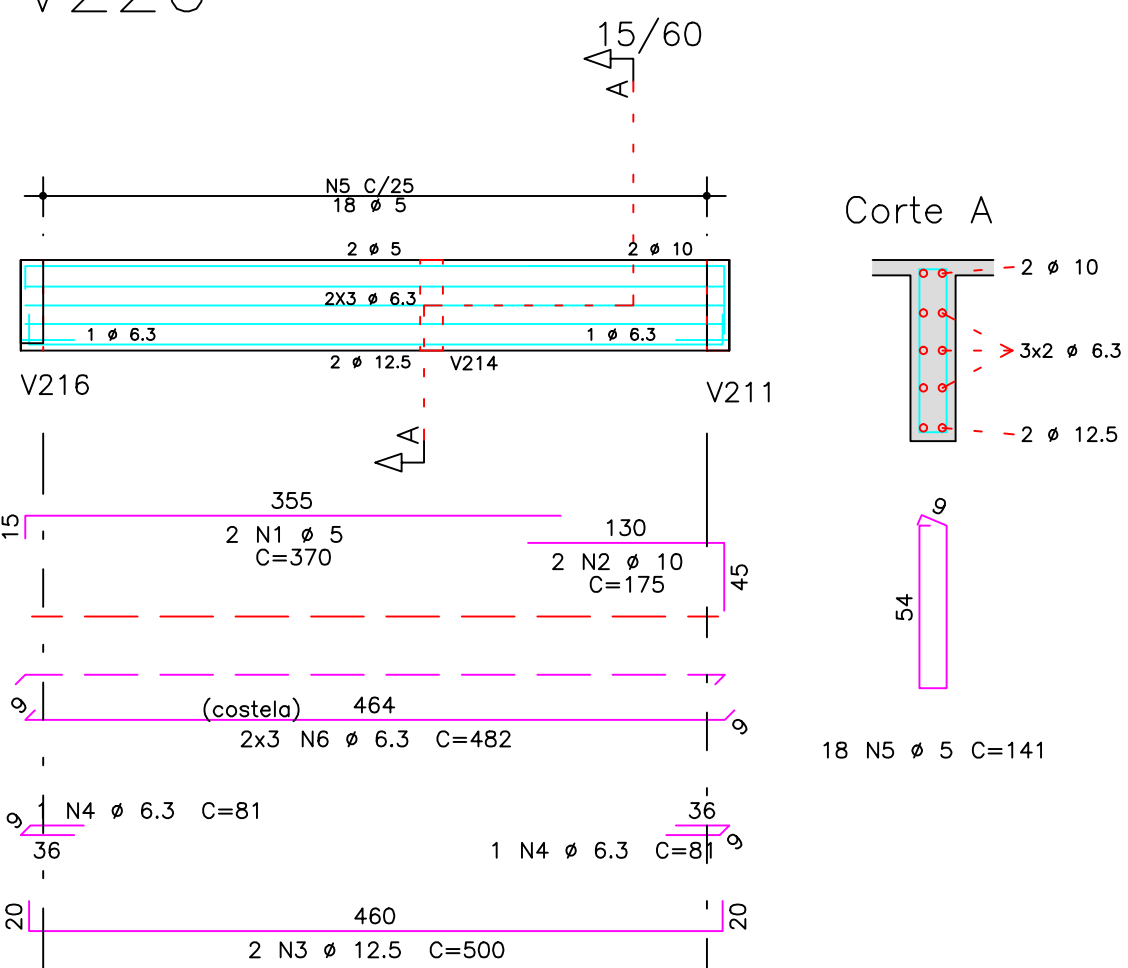
V225



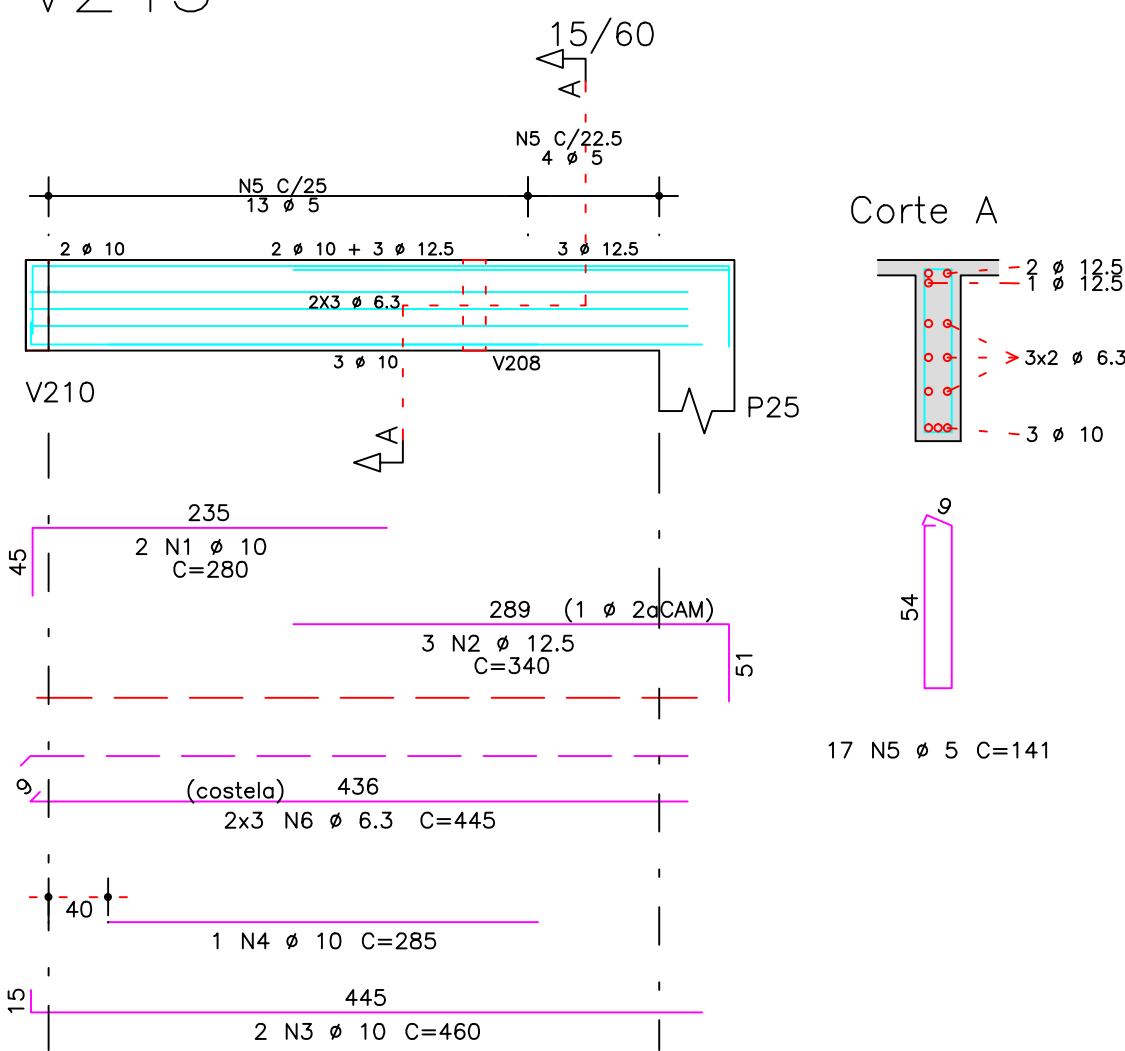
V230



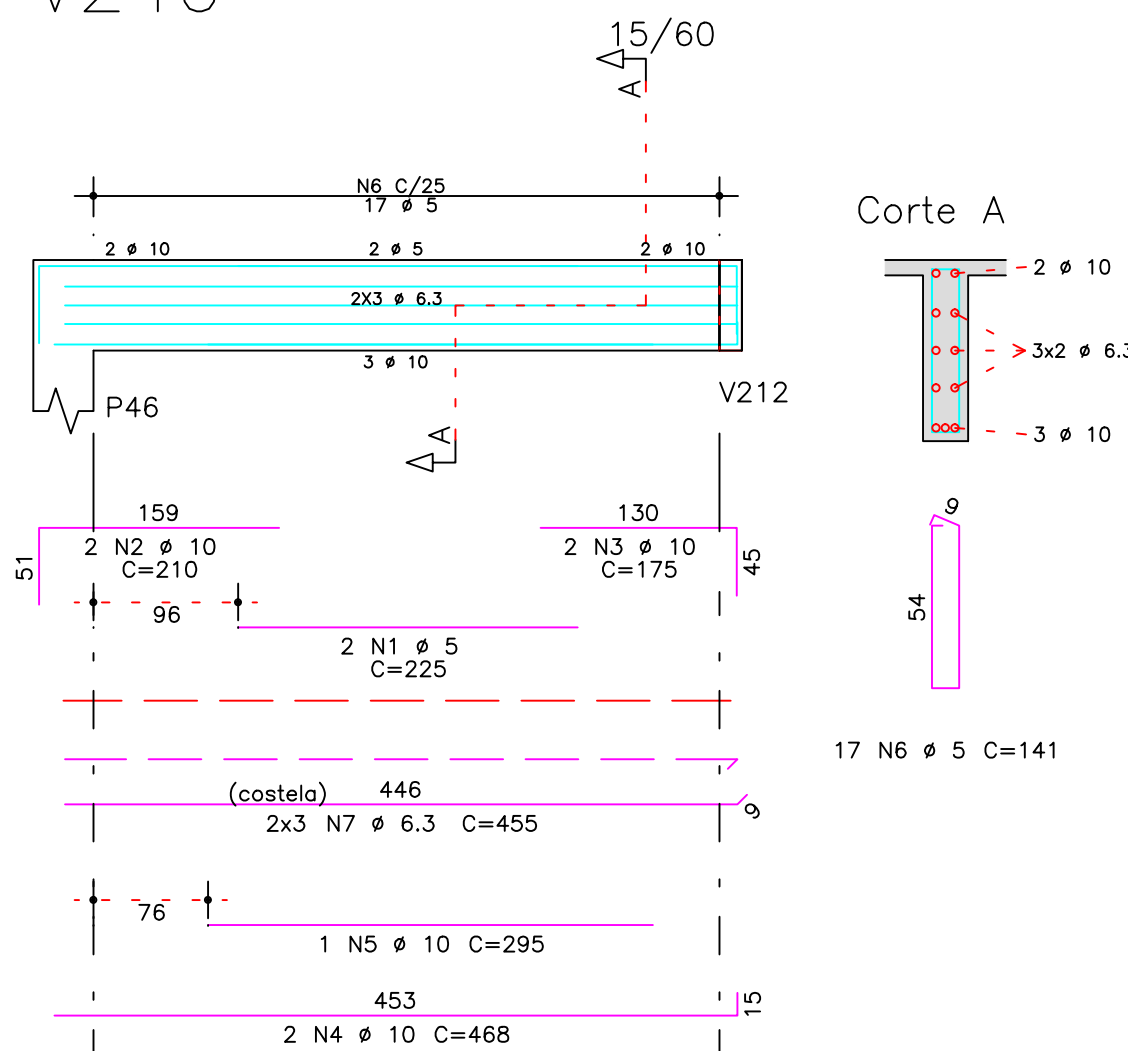
V220



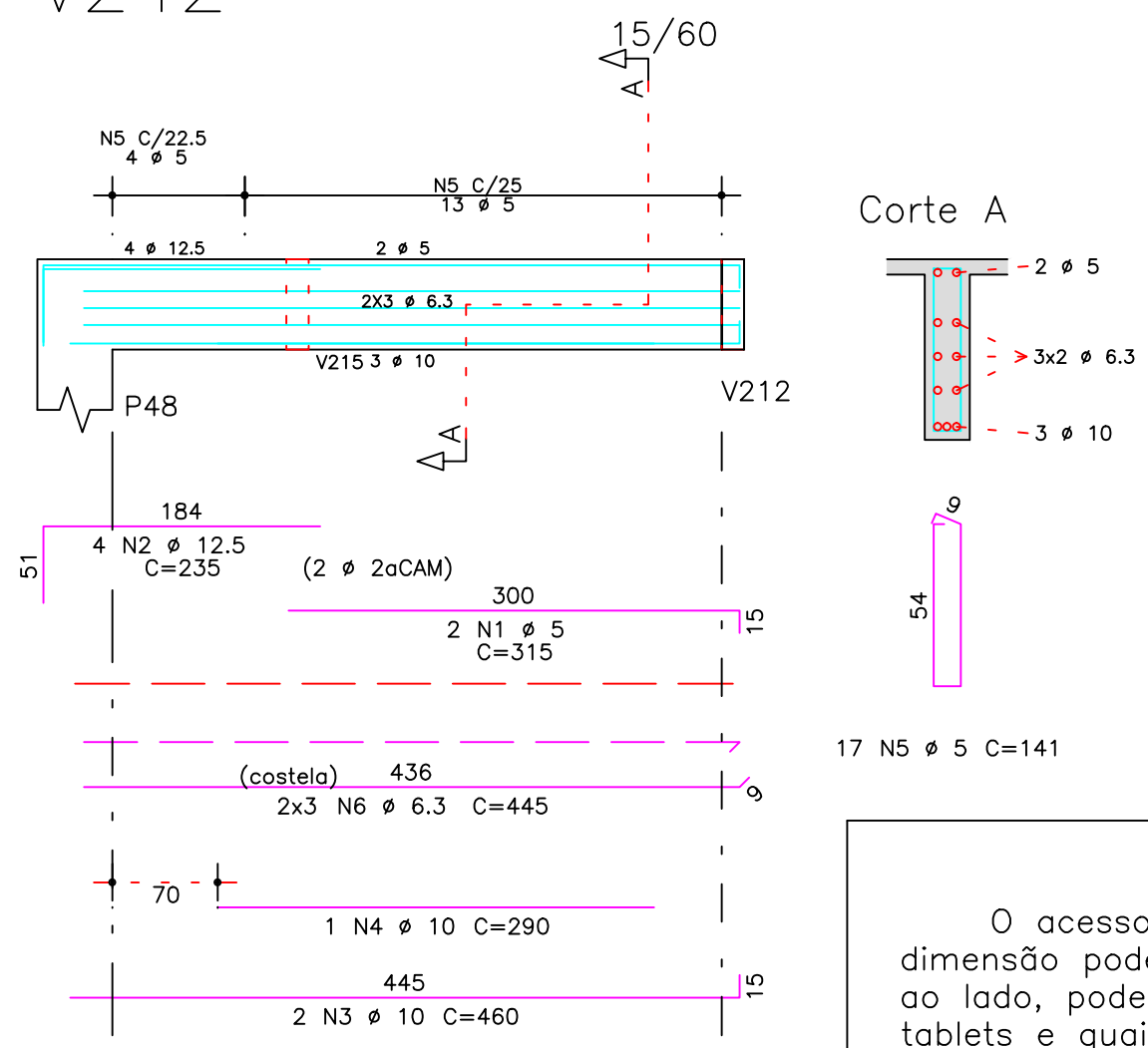
V243



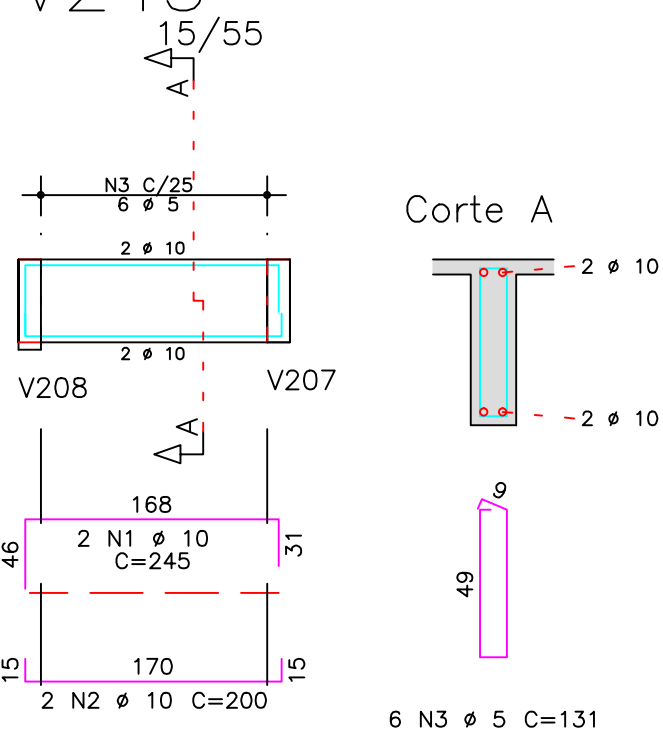
V240



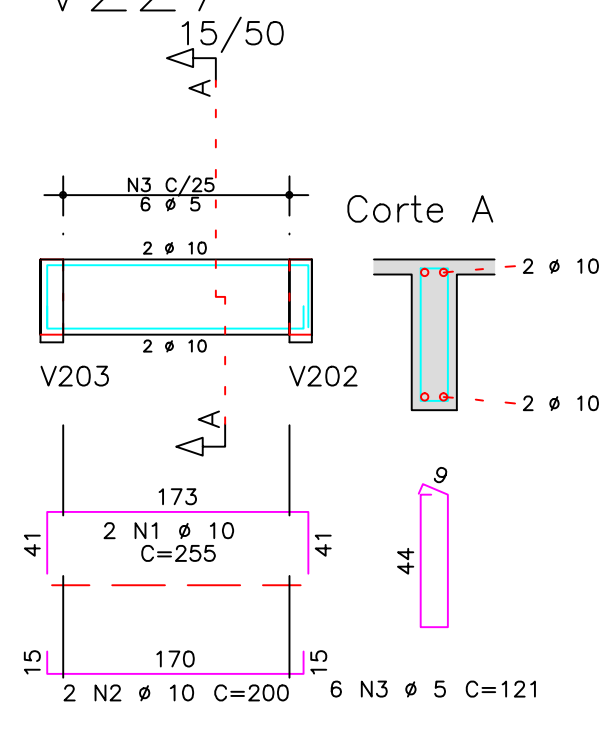
V242



V245



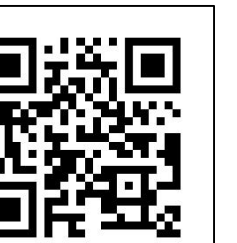
V227



AÇO	POS	BIT (mm)	QUANT	COMPRIMENTO UNIT (cm)	TOTAL (cm)
V202					
50A	1	10	2	260	520
60B	2	5	2	280	560
50A	3	12.5	2	420	840
50A	4	12.5	1	200	200
50A	5	10	7	845	1690
50A	6	10	1	230	230
50A	7	10	1	235	235
60B	8	5	32	131	4192
V209					
50A	1	6.3	2	335	670
50A	2	10	4	180	720
50A	3	12.5	3	575	1725
50A	4	12.5	2	295	590
50A	5	6.3	2	91	182
60B	6	5	18	131	2358
50A	7	6.3	3	132	396
V213					
50A	1	10	2	905	1810
50A	2	10	1	175	175
50A	3	10	1	845	1690
50A	4	10	1	220	220
50A	5	10	1	245	245
60B	6	5	32	131	4192
V220					
60B	1	5	2	370	740
50A	2	10	2	175	350
50A	3	12.5	2	500	1000
50A	4	6.3	2	81	162
60B	5	5	18	141	2538
50A	6	6.3	6	482	2892
V225					
50A	1	6.3	2	495	990
50A	2	10	7	170	1190
50A	3	25	2	760	1520
50A	4	25	1	390	390
50A	5	8	6	106	636
60B	6	5	20	131	2620
50A	7	6.3	14	132	1848
V226					
50A	1	10	2	210	420
60B	2	5	2	210	420
50A	3	12.5	2	360	720
50A	4	10	3	200	600
50A	5	10	2	787	1574
50A	6	10	1	260	260
60B	7	5	30	131	3930
V227					
50A	1	10	2	255	510
50A	2	10	2	200	400
60B	3	5	6	121	726
V230					
60B	1	5	2	375	750
50A	2	10	2	170	340
50A	3	12.5	2	500	1000
50A	4	12.5	2	380	760
50A	5	8	4	91	364
60B	6	5	19	131	2489
V240					
60B	1	5	2	225	450
50A	2	10	2	175	350
50A	3	10	2	468	936
50A	4	10	1	295	295
60B	5	5	17	141	2397
50A	6	6.3	6	455	2730
V242					
60B	1	5	2	315	630
50A	2	12.5	4	235	940
50A	3	10	2	460	920
50A	4	10	1	290	290
60B	5	5	17	141	2397
50A	6	6.3	6	445	2670
V245					
50A	1	10	2	280	560
50A	2	12.5	3	340	1020
50A	3	10	2	460	920
50A	4	10	1	285	285
60B	5	5	17	141	2397
50A	6	6.3	6	445	2670

RESUMO AÇO CA 50-60			
AÇO	BIT (mm)	COMPR (m)	PESO (kg)
60B	5	346	53
50A	6.3	152	37
50A	8	10	4
50A	10	190	118
50A	12.5	88	85
50A	25	19	74
Peso Total 60B =			53 kg
Peso Total 50A =			317 kg

O acesso ao Modelo Estrutural em dimensão pode ser executado pelo QR CODE ao lado, podendo acessar via celulares, tablets e quaisquer outros dispositivos.



<b>Schuring &amp; Schuring Ltda.</b> Escritório Técnico B.E.SCHURING - Projetos de Engenharia Av. XV de Novembro, 489 - Porto 2o. Andar - Cuiabá MT Fone:(065) 321 9959 - Fax:(065) 623 5066 - Email - schuring@terra.com.br	
PROJETO: PROPRIETÁRIO: PREFEITURA MUNICIPAL VARZEA GRANDE MT RESP. TEC. EXECUÇÃO:	OBRA: <b>PREFEITURA MUNICIPAL DE VARZEA GRANDE MT</b> Unid. Básica de Saúde <b>UBS-MATILDE CURVO DE MORAES</b> END.: Av. dos Bandeirantes. Conj. Habit. José Carlos Guimarães, Várzea Grande-MT
AUTORES DO PROJETO: Benedito Eliséu Schuring Eng. Civil - CREA 715/D-MT André Luiz Schuring Eng. Civil - CREA 8697/D-MT	ASSUNTO: <b>COBERTURA DET ARM VIGA</b> PECAS DETALHADAS V202 / V209 / V213 / V220 / V225 / V226 V227 / V230 / V240 / V242 / V243 / V245
FOLHA No. 23	DATA: 15/07/2019